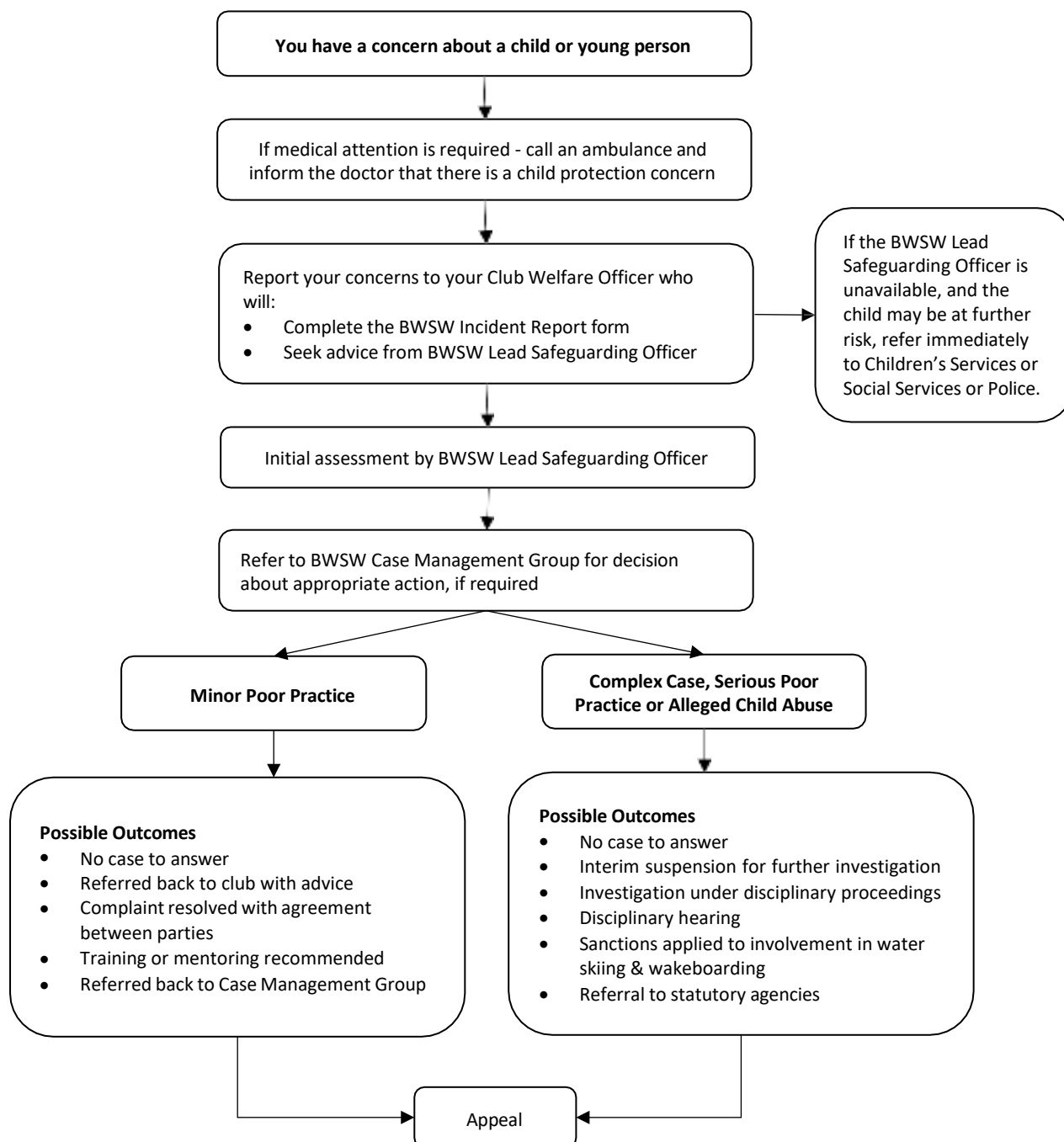


British Water Ski & Wakeboard Reporting Procedures



Concerns of Possible Abuse from WITHIN the Sport

If you are responding to concerns, allegations or suspicions of suspected abuse WITHIN the Water skiing/wakeboarding environment (i.e. in your club/centre), you should follow the actions in the flowchart below;



For advice and support, please contact BWSW Lead Safeguarding Officer:

www.bsw.org.uk/contact-us/